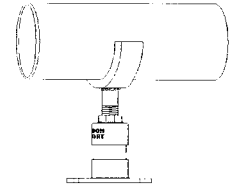


# STANDON PIPE SUPPORTS INC.

## ADJUSTABLE PIPE SUPPORTS



## Standon Model S89 Flange Support

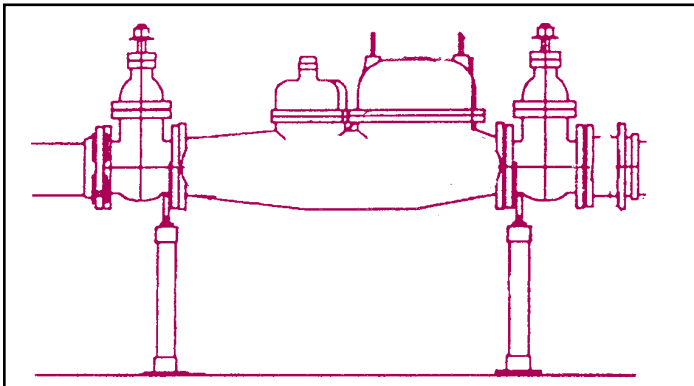
US PATENT #5110073

*ALL MODELS TESTED TO OVER 10,000 POUNDS - COMPRESSIVE STRENGTH*

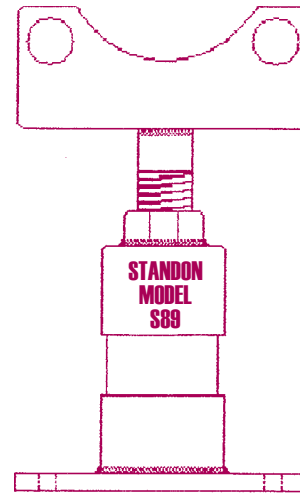
A positively attached support designed to meet all or your flanged piping needs. . .

- Bolts directly to the flange
- Accepts standard IPS pipe - No threading required
- Comes complete with anchorable base plate
- Laser cut steel for guaranteed fit every time
- Available in sizes 2" through 48" - Class 125 flanges
- Galvanized finish for extra protection

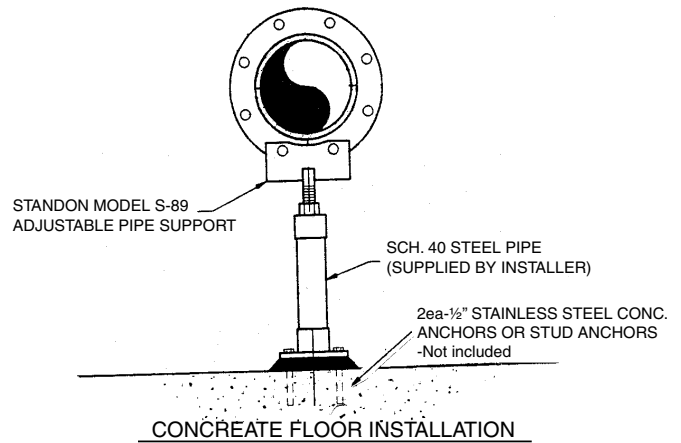
**Excellent for Backflow  
and Meter Installations!**



The Standon Support is ideal for use on backflow devices and large water meters. It is perfect for retrofitting existing installations, replacing ill fitting concrete blocks etc.



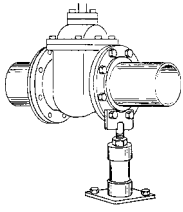
The Standon model S89 comes packaged in an easily inventoried box. All mounting instructions are included.



For product availability and ordering information on these and other products offered by Standon Pipe Supports Inc. please call:

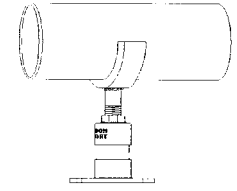
(503) 533-5256 or FAX (503) 533-5501  
or visit our website at  
[www.standon.net](http://www.standon.net)

**STANDON PIPE SUPPORTS INC.**  
**PO Box 247**  
**Forest Grove, Oregon 97116**



# STANDON PIPE SUPPORTS INC.

## ADJUSTABLE PIPE SUPPORTS



### Standon Model S89 flange Support Product Specification Sheet

*ALL MODELS TESTED TO OVER 10,000 POUNDS - COMPRESSIVE STRENGTH*

**MATERIAL -**

- Flange plate: ASTM A36
- Collar / base cups: ASTM A53 / ASTM A513 D.O.M. tubing
- Thread stud: ASTM A36, rolled thread, grade ASTM A307
- Base plate: ASTM A36 sheet steel

Optional Material - 100% 304L or 316L Stainless steel

**FABRICATION -**

- All welds: 100% MIG welding, electrode E70XX
- Plates: Laser cut, programmed dimensions, radiused corners

**FINISH -**

- All supports have corrosion resistant, electro-galvanized finish.
- Hot dip galvanizing available - specify at time of order.

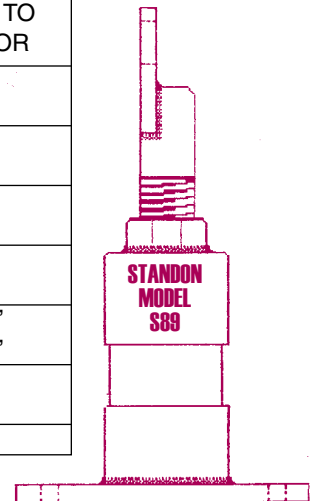
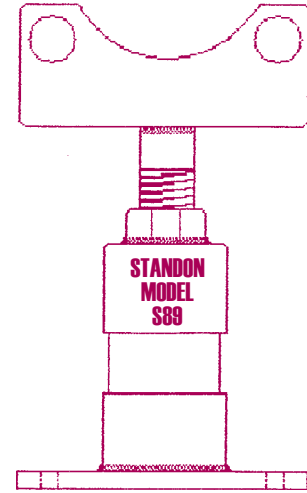
**DIMENSIONS -** (note: call manufacturer for 30" through 48" support information)

FLANGE SIZE	HOLE RADIUS	FLG PLATE	THRD STUD	BASE PLATE	EXTENSION PIPE REQ.	MINIMUM DIST. TO FLOOR
2"	2.375"	.250"	1" x 6"	4" x 6" x .25"	2" Sch. 40	7"
2.5"	2.75"	.250"	1" x 6"	4" x 6" x .25"	2" Sch. 40	7"
3"	3.00"	.250"	1" x 6"	4" x 6" x .25"	2" Sch. 40	7"
4"	3.75"	.250"	1" x 6"	4" x 6" x .25"	2" Sch. 40	7"
6"	4.75"	.250"	1" x 6"	4" x 6" x .25"	2" Sch. 40	7"
8"	5.87"	.250"	1" x 6"	4" x 6" x .25"	2" Sch. 40	7"
10"	7.125"	.250"	1" x 6"	4" x 6" x .25"	2" Sch. 40	7"
12"	8.50"	.250"	1" x 6"	4" x 6" x .25"	2" Sch. 40	7"
14"	9.375"	.375"	1½" x 6"	8" x 8" x .5"	3" Sch. 40	9.5"
16"	9.625"	.375"	1½" x 6"	8" x 8" x .5"	3" Sch. 40	9.5"
18"	11.375"	.375"	2" x 6"	8" x 8" x .5"	4" Sch. 40	10"
20"	12.50"	.375"	2" x 6"	8" x 8" x .5"	4" Sch. 40	10"
24"	14.75"	.375"	2" x 6"	8" x 8" x .5"	4" Sch. 40	10"

NOTE: 250 Drilling pattern supports available

**INSTALLATION -**

To insure proper Support performance and stability; After final height adjustment is attained, apply tack welds to both support cups and extension pipe. Use E70XX electrode for welds. The base plate should be anchored to the floor with removable anchor bolts. If re-adjustment is required at a later date, remove anchor bolts and rotate entire lower unit using collar nut. Re-anchor base plate.

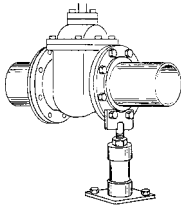


For product availability and ordering information on these and other products offered by Standon Pipe Supports Inc, please call:

**(503) 533-5256 or (877) 693-0727**  
**FAX (503) 533-5501**

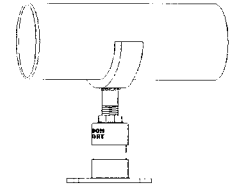
[www.standon.net](http://www.standon.net)

**STANDON PIPE SUPPORTS INC.**  
**2800 Taylor Way Bldg. 1**  
**PO Box 247**  
**Forest Grove, Oregon 97116**



# STANDON PIPE SUPPORTS INC.

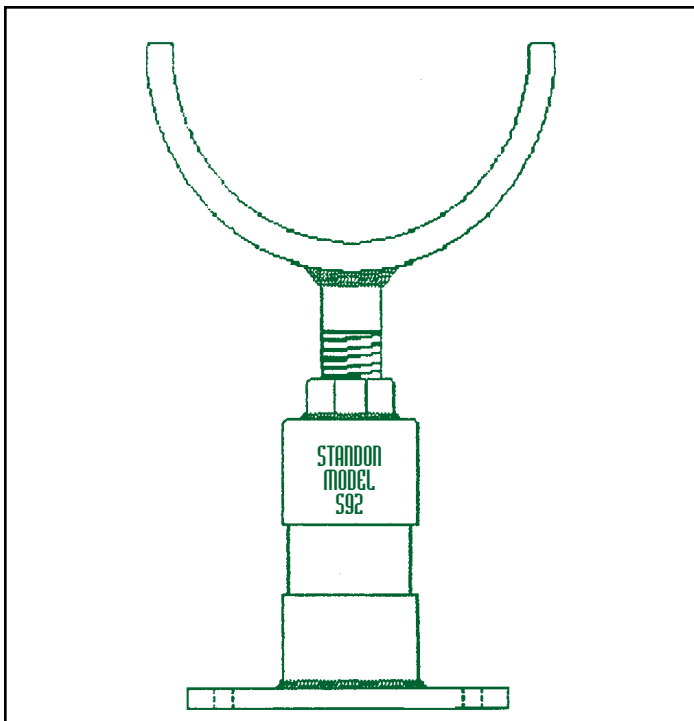
## ADJUSTABLE PIPE SUPPORTS



### Standon Model S92 Saddle Support

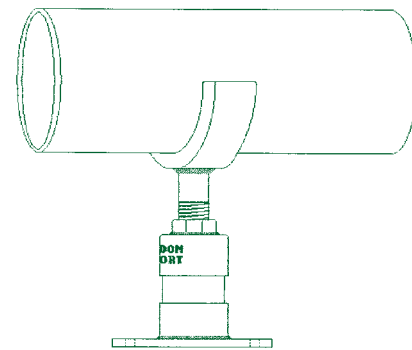
The Standon Model S92 Saddle Support was specifically designed to fit your pipe! A nearly 50% circumferential cradle (170°), and a pipe-to-saddle gap clearance of less than .125" guarantees excellent performance.

The Standon Saddle Support comes with an oversized base and an adjustable collar allowing up to 3" of fine adjustment.

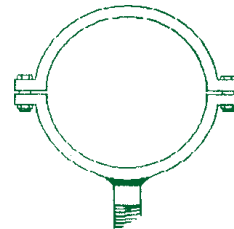


The Standon Saddle Support is offered in a variety of metals and sizes. Because corrosion is a concern, we offer a galvanized finish. Better yet - try our 100% 304 stainless steel version.

*“Quality you can Stand On”*  
*“All Models Tested to 10,000 lbs. Compressive Strength”*



Packaged in an easily inventoried box, the Standon Saddle Support is always ready to do the job. An installation guide is included with each Support. The customer supplies the course extension pipe (size is determined by the size of the support being used). The extension pipe should be field cut to the length required. No threading is needed. The collar and base cups are sized to accept standard sizes of iron pipe. Schedule 40 is the minimum thickness recommended.

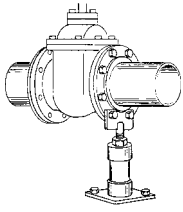


The Standon model C92 is a two piece, full circle saddle clamp. It comes supplied with two bolts and nuts to retain the matching top saddle.

For product availability and ordering information on these and other products offered by Standon Pipe Supports Inc, please call:

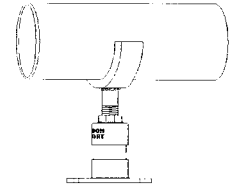
(503) 533-5256 or FAX (503) 533-5501  
or visit our website at  
[www.standon.net](http://www.standon.net)

**STANDON PIPE SUPPORTS INC.**  
**PO Box 247**  
**Forest Grove, Oregon 97116**



# STANDON PIPE SUPPORTS INC.

## ADJUSTABLE PIPE SUPPORTS



### Standon Model S92 Saddle Support Product Specification Sheet

*ALL MODELS TESTED TO OVER 10,000 POUNDS - COMPRESSIVE STRENGTH*

**MATERIAL -**

Saddle strap: ASTM A36  
 Collar / base cups: ASTM A53 / ASTM A513 D.O.M. tubing  
 Thread stud: ASTM A36, rolled thread, grade ASTM A307  
 Base plate: ASTM A36 sheet steel

Optional Material - 100% 304L or 316L Stainless steel

**FABRICATION -**

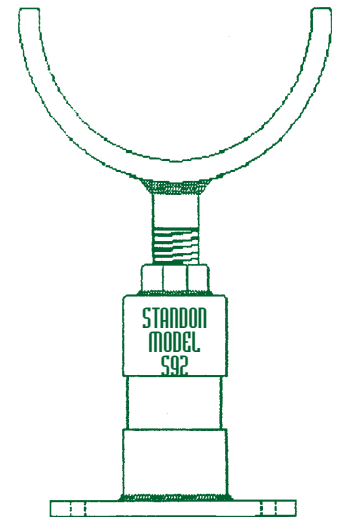
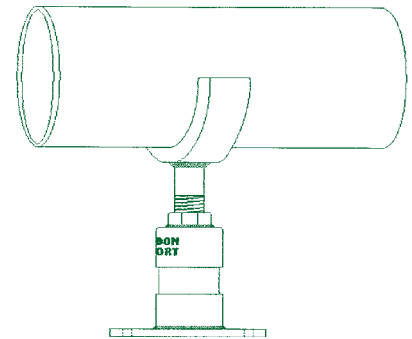
All welds: 100% MIG welding, electrode E70XX  
 Saddle: Formed to ductile iron pipe radius  
 Optional neoprene liner available for IPS pipe

**FINISH -** All supports have corrosion resistant, electro-galvanized finish.  
 Hot dip galvanizing available - specify at time of order

**OPTION-** A neoprene liner is available to isolate pipe from saddle.

**DIMENSIONS -** (Note: call manufacturer for 30" through 48" support info.)

SUPPORT SIZE	STRAP SIZE	THRD STUD	BASE PLATE	EXTENSION PIPE REQ.	MINIMUM DIST. TO FLOOR
2"	.375" x 2"	1" x 6"	4" x 6" x .25"	2" Sch. 40	7"
2.5"	.375" x 2"	1" x 6"	4" x 6" x .25"	2" Sch. 40	7"
3"	.375" x 2"	1" x 6"	4" x 6" x .25"	2" Sch. 40	7"
4"	.50" x 2"	1" x 6"	8" x 8" x .25"	2" Sch. 40	7"
6"	.50" x 2"	1" x 6"	8" x 8" x .25"	2" Sch. 40	7"
8"	.50" x 2"	1" x 6"	8" x 8" x .25"	2" Sch. 40	7"
10"	.50" x 2"	1" x 6"	8" x 8" x .25"	2" Sch. 40	7"
12"	.50" x 2"	1" x 6"	8" x 8" x .25"	2" Sch. 40	7"
14"	.625" x 3"	1½" x 6"	8" x 8" x .5"	3" Sch. 40	9.5"
16"	.625" x 3"	1½" x 6"	8" x 8" x .5"	3" Sch. 40	9.5"
18"	.75" x 4"	2" x 6"	8" x 8" x .5"	4" Sch. 40	10"
20"	.75" x 4"	2" x 6"	8" x 8" x .5"	4" Sch. 40	10"
24"	.75" x 4"	2" x 6"	8" x 8" x .5"	4" Sch. 40	10"



**INSTALLATION -**

To insure proper Support performance and stability; After final height adjustment is attained, apply tack welds to both support cups and extension pipe. Use E70XX electrode for welds. The base plate should be anchored to the floor with removable anchor bolts. If re-adjustment is required at a later date, remove anchor bolts and rotate entire lower unit using collar nut. Re-anchor base plate.

For product availability and ordering information on these and other products offered by Standon Pipe Supports, please call:

(503) 533-5256 or (877)693-0727  
 FAX (503) 533-5501

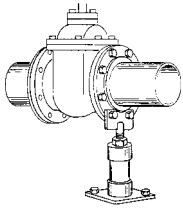
WWW.STANDON.NET

**STANDON PIPE SUPPORTS INC.**

**2800 Taylor Way Bldg. 1**

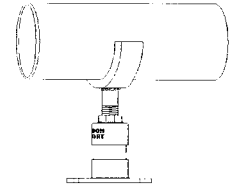
**PO Box 247**

**Forest Grove, OR 97116**



# STANDON PIPE SUPPORTS INC.

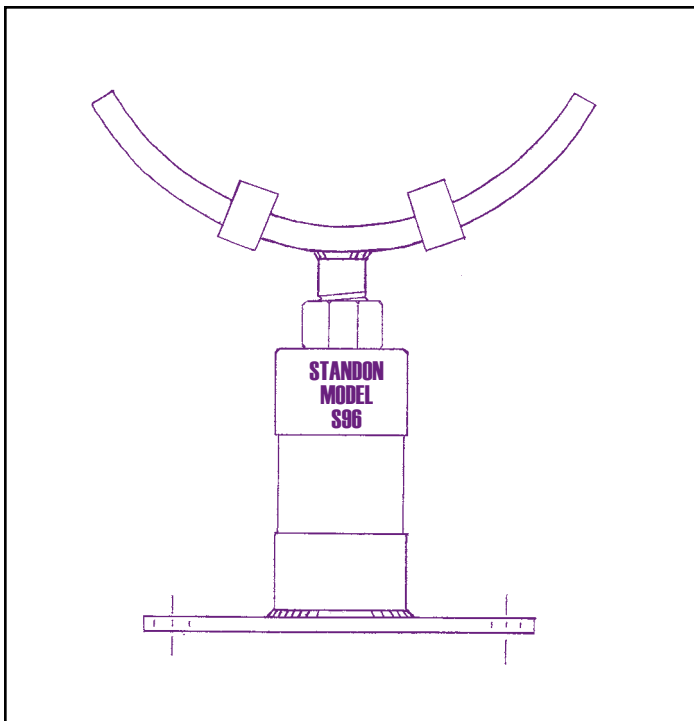
## ADJUSTABLE PIPE SUPPORTS



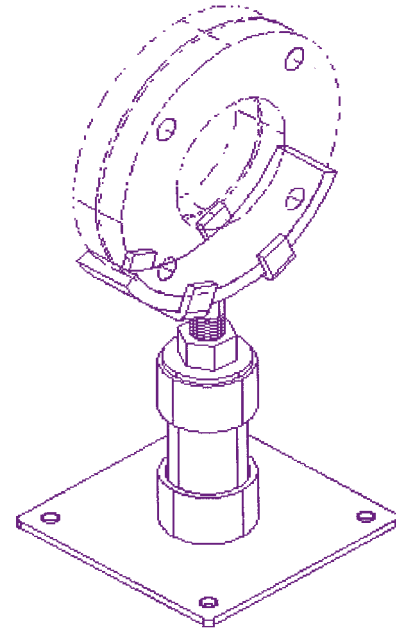
### Standon Model S96 Flange Cradle Support

The Standon Model S96 Flange Cradle Support was designed for use not only in new installations, but also as an economical replacement in existing facilities. The innovative saddle design is radiused to fit snugly under your assembled flange configurations. Centering tabs maintain position during seismic activity, and are spaced to avoid bolt position conflict.

The Standon Flange Cradle Support comes with an oversized base and an adjustable collar allowing up to 3" of fine adjustment.



The Standon Flange Cradle Support is offered in A36 mild steel. To help reduce corrosion, the entire assembly is Galvanized. This is our standard finish, it is not considered an "option". For ultimate endurance, we offer a 100% 304 Stainless Steel version.



All cradles are manufactured to rest under CL125 Flanges. They match the flange outside diameter with a form fitting radius which encompasses a full 120° of the flange. There are two sturdy centering tabs which protrude above the cradle to eliminate the possibility of position failure.

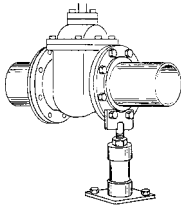
*"Quality you can Stand On"*

*"All Models Tested to 10,000 lbs. Compressive Strength"*

For product availability and ordering information on these and other products offered by Standon Pipe Supports Inc. please call:

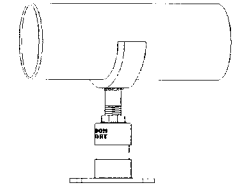
(503) 533-5256 or FAX (503) 533-5501  
or visit our website at  
[www.standon.net](http://www.standon.net)

**STANDON PIPE SUPPORTS INC.**  
**PO Box 247**  
**Forest Grove, OR 97116**



# STANDON PIPE SUPPORTS INC.

## ADJUSTABLE PIPE SUPPORTS



### Standon Model S96 Flange Cradle Support Product Specification Sheet

*ALL MODELS TESTED TO OVER 10,000 POUNDS - COMPRESSIVE STRENGTH*

**MATERIAL -**

- Flange Cradle: ASTM A36
- Collar / base cups: ASTM A53 / ASTM A513 D.O.M. tubing
- Thread stud: ASTM A36, rolled thread, grade ASTM A307
- Base plate: ASTM A36 sheet steel

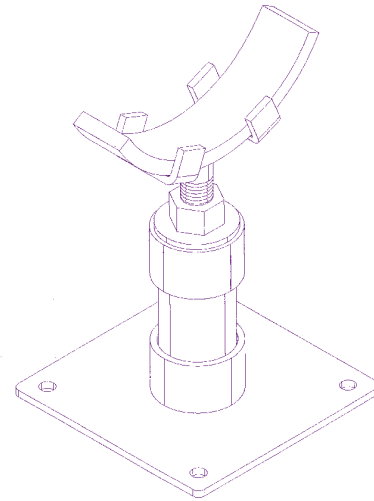
Optional Material - 100% 304 Stainless steel

**FABRICATION -**

- All welds: 100% MIG welding, electrode E70XX
- Cradle: Radiused to CL125 flange diameter, 120° coverage (not designed for Sch. 80 PVC flanges)

**FINISH -**

- All supports have corrosion resistant, electro-galvanized finish.
- Hot dip galvanizing available - specify at time of order



**DIMENSIONS -**

FLANGE cl 125	CRADLE MATERIAL	THRD STUD	BASE PLATE	EXTENSION PIPE REQ.	MINIMUM DIST. TO FLOOR	ANCHOR HOLES
3"	.50" x 2.0"	1" x 6"	4" x 6" x .25"	2" Sch. 40	7"	2 ea. - 9/16"
4"	.50" x 2.0"	1" x 6"	8" x 8" x .25"	2" Sch. 40	7"	4 ea. - 9/16"
6"	.50" x 2.0"	1" x 6"	8" x 8" x .25"	2" Sch. 40	7"	4 ea. - 9/16"
8"	.50" x 2.5"	1" x 6"	8" x 8" x .25"	2" Sch. 40	7"	4 ea. - 9/16"
10"	.50" x 2.5"	1" x 6"	8" x 8" x .25"	2" Sch. 40	7"	4 ea. - 9/16"
12"	.50" x 2.5"	1" x 6"	8" x 8" x .25"	2" Sch. 40	7"	4 ea. - 9/16"
14"	.625" x 3.0"	1½" x 6"	8" x 8" x .5"	3" Sch. 40	9.5"	4 ea. - 3/4"
16"	.625" x 3.0"	1½" x 6"	8" x 8" x .5"	3" Sch. 40	9.5"	4 ea. - 3/4"
18"	.75" x 3.5"	2" x 6"	8" x 8" x .5"	4" Sch. 40	10"	4 ea. - 3/4"
20"	.75" x 3.5"	2" x 6"	8" x 8" x .5"	4" Sch. 40	10"	4 ea. - 3/4"
24"	.75" x 3.5"	2" x 6"	8" x 8" x .5"	4" Sch. 40	10"	4 ea. - 3/4"

NOTE: Seismic tabs are .75" or 1" wide x .25" thick, depending on support size.

**INSTALLATION -**

To insure proper Support performance and stability; After final height adjustment is attained, apply tack welds to both support cups and extension pipe. Use E70XX electrode for welds. The base plate should be anchored to the floor with removable anchor bolts. If readjustment is required at a later date, remove anchor bolts and rotate entire lower unit using collar nut. Re-anchor base plate.

For product availability and ordering information on these and other products offered by Standon Pipe Supports Inc, please call:

(503) 533-5256 or (877) 693-0727

FAX (503) 533-5501

www.standon.net

**STANDON PIPE SUPPORTS INC.**

**2800 Taylor Way Bldg. 1**

**PO Box 247**

**Forest Grove, OR 97116**